



# 2002 DUAL AIR SERVICE GUIDE

(FOR PSYLO RACE AND SID SL/RACE)\*

## Table of Contents

Tools Needed .....	2
Remove Lower Tube Assembly .....	2
Remove the Dual Air Assembly .....	3
Clean and Install the Dual Air Assembly .....	4
Refill Fluids .....	5
Air Pressure Guidelines .....	5
Warranty .....	6
2002 Psylo Race .....	7
2002 SID SL/Race .....	8
International Distributors .....	10

\* For Duke Race Service, see the Duke Service Guide.

For exploded diagram and part number information, refer to the 2002 Spare Parts Catalog, P/N 950-006157-00. Contact your local distributor or visit the RockShox website at [www.rockshox.com](http://www.rockshox.com) for ordering information.

Information contained in this publication is subject to change at anytime without prior notice. For the latest technical information, visit our website at [www.rockshox.com](http://www.rockshox.com). Names used in this manual may be trademarks or registered trademarks of others.

## TOOLS NEEDED

- 5 mm Hex Wrench
- 10 and 24 mm Socket
- Torque Wrench
- Plastic Face Mallet
- Snap ring pliers
- Small Blade Screwdriver
- SID Cartridge Retainer Tool (SID Race and SL Only) (140-001905-00)
- 12" long cylindrical rod (plastic or wood)
- Biodegradable Cleaning Solvent (Simple Green, Pedros, Isopropyl Alcohol)
- RockShox 5 wt. Oil
- RockShox RedRum
- Safety Glasses
- Oil Pan

After every 100 hours of riding, or less depending on riding conditions and riding style, the following service should be performed. This service should be performed by a qualified mechanic, using proper tools.

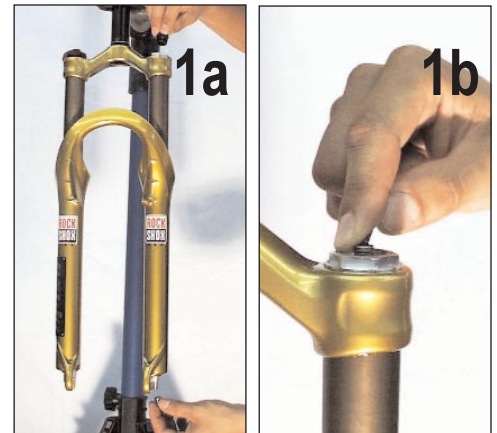
**NOTE: SERVICE ON YOUR FORK MAY BE PERFORMED WHILE STILL INSTALLED ON YOUR BICYCLE. USE THE EXPLODED VIEWS AT THE END OF THIS GUIDE TO IDENTIFY AND REFERENCE PARTS.**

**FOR INFORMATION REGARDING PURE SYSTEM SERVICE, REFER TO THE PURE SYSTEM SERVICE GUIDE ON OUR WEBSITE AT [WWW.ROCKSHOX.COM](http://WWW.ROCKSHOX.COM).**

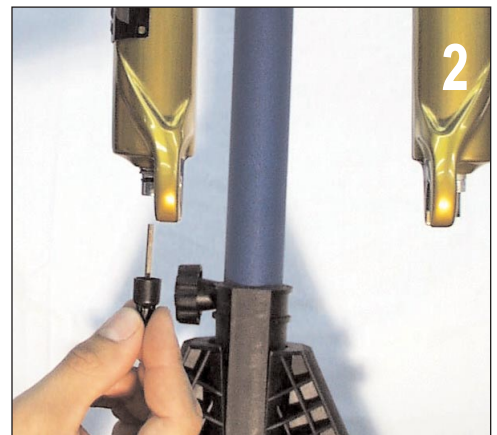
**FOR SERVICE INFORMATION REGARDING DUKE RACE, SEE THE DUKE SERVICE GUIDE.**

## REMOVE LOWER TUBE ASSEMBLY

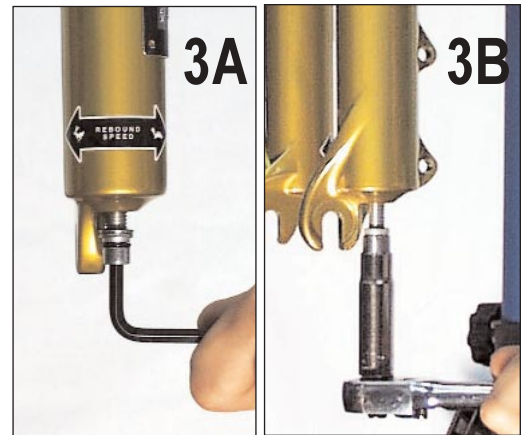
1. Remove the air cap from the top cap and deflate the positive air chamber. Then remove the air cap from the negative valve and deflate the air from the negative air chamber.



2. Gently pull downward to remove the rebound adjuster knob from the right shaft bolt



- Using a 5 mm hex wrench, loosen the right shaft bolt five turns. Using a 10 mm socket, loosen the left shaft nut until it is flush with the dual air shaft end.



- Tap the rebound shaft bolt and dual air shaft nut firmly with a plastic faced mallet to separate the shafts from the lower legs. Keep a bucket below the fork to catch the oil. Inspect the condition of removed oil.



- Remove the shaft bolts completely. Carefully slide the lower tube assembly off of the upper tubes. Use the bucket to catch the excess oil. If the oil is opaque and/or milky (water contamination), the lower tube assembly should be cleaned. Inspect the dust seals, foam rings and bushings for wear and replace as necessary (Psylo Revive Kit, 110-006350-00; and SID Revive Kit, 110-006204-00).
- Apply biodegradable solvent (Simple Green, Pedros, or isopropyl alcohol) to a clean rag and use a long cylindrical rod or screwdriver to clean the lower tube internals. Dry thoroughly.



## REMOVE THE DUAL AIR ASSEMBLY

- Using a 22 mm socket wrench, remove the air top cap. Inspect and clean the air top cap and air valve using isopropyl alcohol.

**NOTE: ENSURE ALL AIR IS REMOVED BEFORE REMOVING THE TOP CAP.**

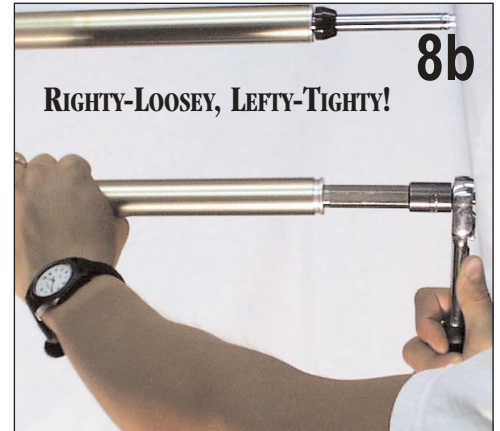


8. **Psylo Race:** With curved snap ring pliers, remove the dual air snap ring (fig. 8a). Slide the dual air assembly (with air tube) out of the upper tube.

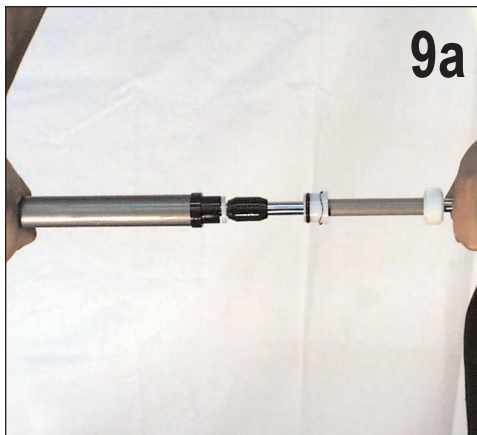


**SID:** Using the SID cartridge retainer tool and a socket wrench, remove the dual air assembly (fig. 8b).

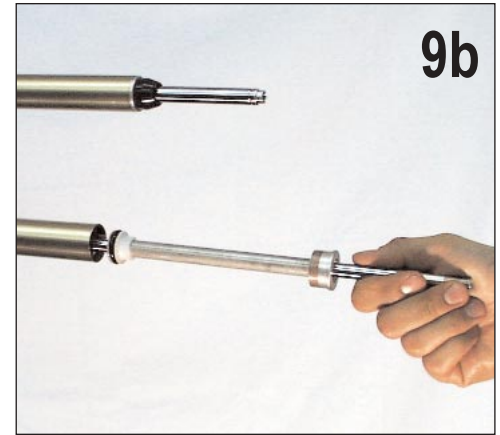
**IMPORTANT: THE SID DUAL AIR CARTRIDGE RETAINER IS REVERSE THREADED, TURN CLOCKWISE FOR REMOVAL. RIGHTY-LOOSEY, LEFTY-TIGHTY!**



9. **Psylo Race:** Gently pull the white base valve from the air tube and remove the dual air assembly (fig. 9a).

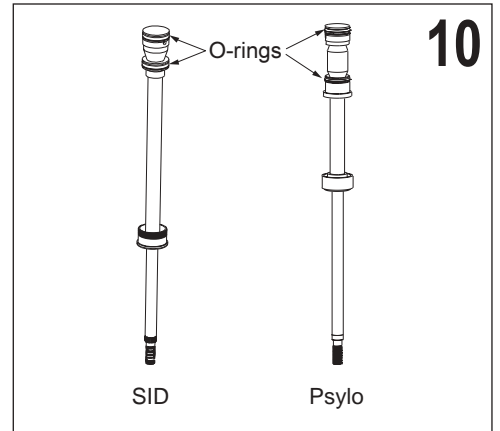


**SID:** Gently pull the dual air assembly from the upper tube (there is no air tube as seen in the Psylo Race) (fig. 9b).



## CLEAN AND INSTALL THE DUAL AIR ASSEMBLY

10. Clean and inspect the o-rings, base plate and wave washers on the dual air assembly. O-rings should be inspected for nicks, tears or cracks. Replace them as necessary.



11. Inspect air tube (Psylo Race, fig. 11) and upper tubes for scratches or other damage. Replace as necessary. Apply biodegradable solvent (Simple Green, Pedros, or isopropyl alcohol) to a clean rag and use a long cylindrical rod or screwdriver to clean the inside of the air tube (Psylo Race) and upper tube. Dry thoroughly.

12. Apply a light coating of RedRum to the o-ring(s) on the dual air assembly.

13. **Psylo Race:** Gently slide the air tube (with dual air assembly) back into the bottom of the upper tube. Press the base plate assembly firmly into the air tube. Insert the snap ring with the **sharpest side towards the end of the upper tube**. This ensures the snap ring stays in the upper tube.

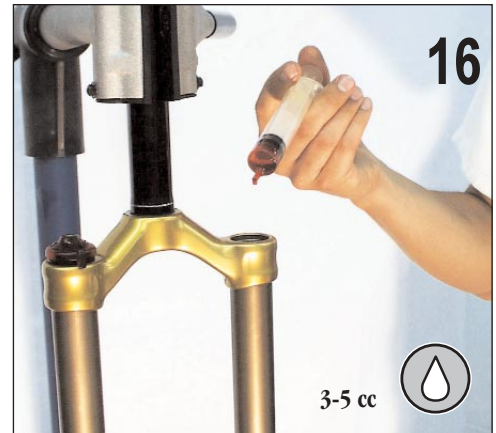
**SID:** Gently slide the dual air assembly back into the upper tube and torque the cartridge retainer to 20 in-lb. **Remember, the cartridge retainer has reverse threads!**



## REFILL FLUIDS

16. Pour 3-5cc of RedRum into the top of the upper tube on top of the air piston. This will ensure long o-ring life, smooth stroke and less friction.
17. Using a 24 mm socket, install the air top cap.
18. Slide the lower tube assembly onto the upper tube assembly until just before the lower bushing engages with the upper tube.

**IMPORTANT: ENSURE THE GREY DUST SEALS ARE PROPERLY SEATED IN THE LOWER LEGS.**



19. Invert the fork and pour 10 cc of RockShox 5 wt. oil into the bottom of both sides of the lower leg.
20. Slide the lower tubes completely onto the upper tubes until the shaft fully engages the lower tubes.
21. **BEFORE** installing the rebound adjuster knob into the hollow shaft bolt, insert the knob into the damper and turn the rebound valve to the full clockwise position. Then remove the knob. **THIS PREVENTS DAMAGE TO THE PLASTIC REBOUND ASSEMBLY IN THE SHAFT (110-005552-00).**
22. Inspect the nylon crush washers for wear or damage and replace if necessary.
23. Install hollow shaft bolt and torque to 60 in-lb. Firmly press the rebound adjuster knob into the hollow shaft bolt.
24. Using a 10 mm socket, install the dual air shaft nut. Torque to 45 in-lb.



## AIR PRESSURE GUIDELINES

25. Using a RockShox Air Pump (with schrader valve), add the recommended **positive air pressure**.

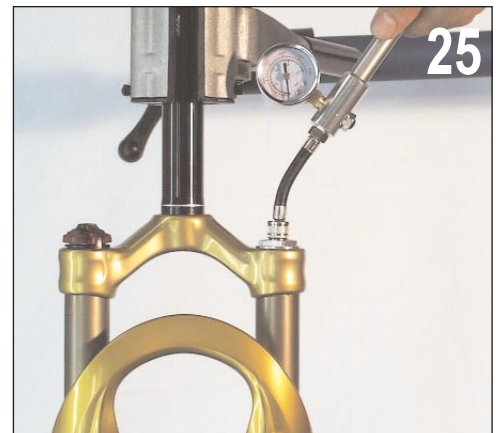
Rider Weight (lb)	Psylo Race	SID
	Air Pressure	Air Pressure
<120 (55 kg)	70-80 psi	70-80 psi
120-140 (55-65 kg)	80-100 psi	80-100 psi
140-160 (65-73 kg)	100-120 psi	100-120 psi
160-180 (73-82 kg)	120-140 psi	120-140 psi
>180 (82 kg)	140-180 psi	140-160 psi

26. Then add desired **negative air**.

Ride Weight (lb)	PSYLO	
	Air Pressure	
<140 (63 kg)	60-115 psi	
140-160 (63-72 kg)	95-130 psi	
160-180 (72-81 kg)	110-145 psi	
180-200 (81-90 kg)	125-160 psi	
>220 (99 kg)	160-180 psi	

Rider Weight	SID	
	XC	Racing
>120lb (55 kg)	70-80 psi	40-60 psi
120-140lb (55-65 kg)	80-100 psi	60-80 psi
140-160lb (65-73 kg)	100-120 psi	80-100 psi
160-180lb (73-82 kg)	120-140 psi	100-120 psi
>180lb (82 kg)	140-160 psi	120-140 psi

27. Install the air caps.





## WARRANTY

RockShox, Inc. warrants its products for a period of one year from original date of purchase to be free from defects in materials or workmanship. Any RockShox product that is returned to the factory and is found by RockShox to be defective in materials or workmanship will be repaired or replaced at the option of RockShox, Inc. This warranty is the sole and exclusive remedy. RockShox shall not be held liable for any indirect, special, or consequential damages.

The warranty does not apply to products which have not been properly installed and adjusted according to RockShox installation instructions. The warranty does not cover any product that has been subject to misuse or whose serial number has been altered, defaced or removed. This warranty does not cover paint damage or modifications to the product. Proof of purchase is required.

### WARRANTY REPAIR

If for any reason it should be necessary to have warranty work done, return the product to the place of purchase. In the USA, Dealers should call for a Return Authorization number (RA#) prior to returning product.

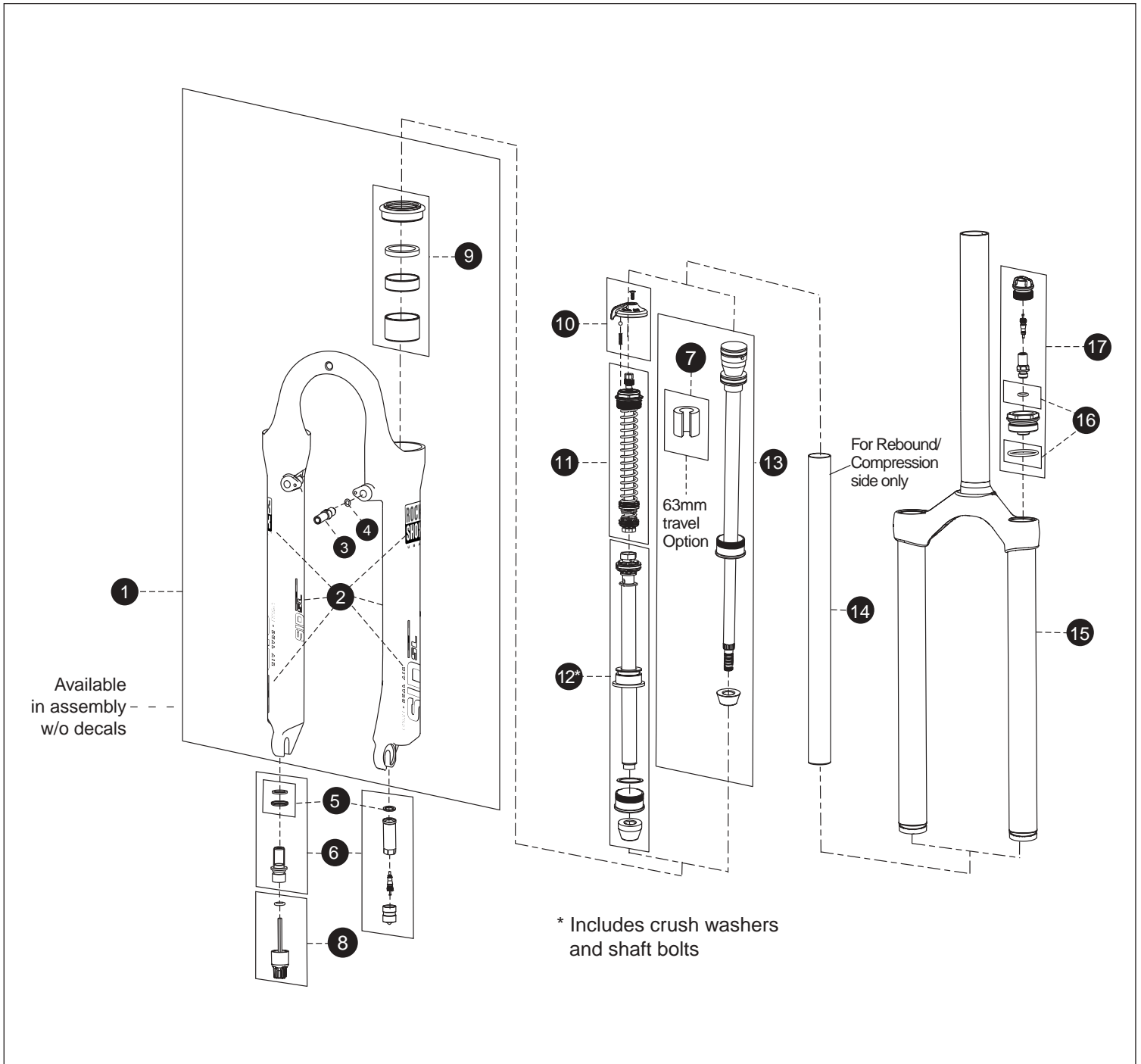
Products returned for inspection must be sent freight prepaid and with proof of purchase to:

RockShox, Inc.  
1610 Garden of the Gods  
Colorado Spring, CO 80907

For more technical information, visit our website at [www.rockshox.com](http://www.rockshox.com). For toll-free technical support in the USA, call 1.800.677.7177.

**Customers in countries other than the USA should contact their local dealer or distributor.**





1	SID SL/Race Lower Leg Assy Black	110-005570-00	8	SID SL/ Psylo Conv. Rebound Adj. Knob	110-005603-00
	SID SL/Race Lower Leg Assy Red	110-005570-02	9	02 SID Revive Kit	110-006204-00
	SID SL/Race Lower Leg Assy SID Blue	110-005570-06	10	Climb-it Control Adjuster Knob	110-005558-00
	SID Race Lower Leg Assy Electric Blue	110-005570-16	11	SID SL/RacePure Compression Assy	110-005586-01
	SID SL/Race Lower Leg Assy (Silver)	110-006442-00	12	SID SL/Race Rebound Assembly	110-005589-01
	SID SL/Race Lower Leg Assy (Prl Wht)	110-006410-00	13	SID SL/Race Negative Spring Assembly	110-005587-00
2	02 SID SL Decal Kit	110-006235-00	14	Pure Tube SID	110-005557-01
	02 SID Race Decal Kit	110-006236-00	15	01 SID SL Crwn/Strr/Uppr 1-1/8 Thdls	110-005588-00
3	Brake Post	48131		02 SID Race Crwn/Strr/Uppr 1-1/8 Thrdls	110-006238-00
	Ti Brake Post	48132		01/02 SID Race CSU (TiNi) 1-1/8 Thdls (Pr/Wht)	110-006409-00
4	Flat Washer	52261	16	SID Top Cap O-ring Service Kit	110-006176-00
5	Crush Washer Kit	110-005552-00	17	02 SID Top Cap (w/air valve)	110-006237-00
6	Dual Air External Hardware Kit	110-005650-00			
7	All Travel Spacer Kit	110-005628-00			

Not Shown	
Pure Rebuild Kit	110-006245-00
Pure Compression Adjuster Rod Kit	110-006324-00

# 2002 DUAL AIR SERVICE GUIDE

---





# INTERNATIONAL DISTRIBUTORS

**Argentina**

Broni S.A.  
Phone: 54 11 4292 3000  
FAX: 54 11 4292 4453  
J.J. PASO 1260, (1832) LOMAS DE ZAMORA,  
BUENOS AIRES

**Australia**

Steve Cramer Products  
Phone: 61 3 9587 1466  
FAX: 61 3 9587 2018  
39 INDUSTRIAL DRIVE BRAESIDE, VICTORIA  
3192

**Austria**

Barisitz-Austria  
Phone: 43 0 5223 46444  
FAX: 43 0 5223 46444-14  
A-6060 Mils  
Gewerbepark 12

**Belgium**

Vertex Cycle Systems BV  
Phone: 31 23 57 18184  
FAX: 31 23 57 18606  
FLEMINGSTRAAT 100A, 2041 VL ZANDVOORT  
HOLLAND

**Bulgaria**

Rog 2000  
Phone: 3592 44 7042  
FAX: 3592 943 3445  
18, IVAN ASSEN STR.  
1000 SOFIA

**Brazil**

Pedal Power  
Phone: 55 11 3845 6997  
FAX: 55 11 3845 6377  
R. GOMES De CARVALHO 541  
SAO PAULO SO  
04547002

**Canada**

Cycles Lambert  
Phone: 800 463-4452 (Quebec)  
FAX: 800 461 1685  
100 Rue des Riveurs  
LEVIS, QUEBEC  
G6V 9G3

**Chile**

Bicicletas Belda Limitada  
Phone: 56 32 881799  
FAX: 56 32 978799  
14 NORTE 1001  
VINA DEL MAR

**Costa Rica**

Inversiones Y Sistemas Garvi  
Phone: 506 296 3383  
FAX: 506 289 7013  
P.O. BOX 4805-1000, SAN JOSE

**Croatia**

Ciklo-Centar  
Phone: 385 1 234 22 24  
FAX: 385 1 234 34 22  
JURJA VES 30A  
10000 ZAGREB

**Czech Republic**

Vanek Praha  
Phone: 42 0 312 698 1889  
FAX: 42 0 312 698 025  
CERRENY UJEZD 185, UNHOST, 27351

**Denmark**

Duell A/S  
Phone: 45 86 36 7800  
FAX: 45 86 36 7377  
MOLLERUPVEJ 3, TAASTRUP, 8410 RONDE

**Ecuador**

Bici Sport  
Phone: 5932 248737  
FAX: 5932 253691  
AV DE DICIEMBRE 6327, ENTRE LOUVRE Y  
TOMAS DE, BERLANGA.LOCAL #3, QUITO

**Estonia**

Hawaii Express  
Phone: 372 6 398 508  
FAX: 372 6 398 566  
REGATI 1, 5K-102, TALLINN, 11911, Estonia  
Or  
Estonian Unidream  
Phone: 372 636 7470  
Fax: 372 636 7470  
Paavli 2A, Tallinn  
EE0004, Estonia

**Finland**

Mr. Cool OY  
Phone: 358 9 3250817  
FAX: 358 9 3250609  
LINNAVUORENTIE 28, HELSINKI, 00950

**France**

Royal Velo France  
Phone: 33 325 433 730  
Fax: 33 325 43 95 95  
4 RUE DES AZALEES, P.A. SUD-CHAMPANGE  
ST THIBAUT, 10800

**Germany**

Sport Import GmbH  
Phone: 49 44 05 9280 0  
FAX: 49 44 05 9280 49  
INDUSTRIESTRASSE 41 B, EDEWECHT, 26188

**Greece**

Gatsoulis Stefanos Imports  
Phone: 30 12512 779  
FAX: 30 12533 960  
8 THESSALONIKIS STREET, NEW FILADELFIA,  
ATHENS, T.T. 14342

**Guatemala**

BYS Importaciones S.A.  
Phone: 502 366 7709  
FAX: 502 363 3918  
18 CALLE 7-48, ZONA 10, GUATEMALA

**Holland**

Vertex Cycle Systems BV  
Phone: 31 23 57 18184  
FAX: 31 23 57 18606  
FLEMINGSTRAAT 100A, 2041 VL ZANDVOORT  
HOLLAND

**Hong Kong**

Flying Ball Bicycle Company  
Phone: 852 23813661  
FAX: 852 23974406  
201 TUNG CHOI ST. G/F, MONGKOK KOWLOON

**Hungary**

Prokero Ltd Co.  
Phone: 361 331 3184  
FAX: 361 331 3184  
KALMAN IMRE UTCA 23, BUDAPEST, 1054

**Iceland**

Orninn Hjol Ltd  
Phone: 354 588 9892  
FAX: 354 588 9896  
SKEIFAN 11, P.O. BOX 8036, REYKJAVIK

**Ireland**

Madison  
Phone: 44 20 8385 3385  
Fax: 44 20 8385 3443  
BUCKINGHAME HOUSE EAST, THE BROADWAY  
STANMORE, MIDDLESEX HA7 4EA  
UNITED KINGDOM

**Israel**

Becidan Cycles  
Phone: 972 9 954 9165  
FAX: 972 9 954 9165  
92 SOKOLOV HERZELYA

**Italy**

Motorquality  
Phone: 39 02 24 951 1  
FAX: 39 02 24 951 228  
20099 SESTO S. GIOVANNI, (MI) I VIA VENEZIA,  
(ANG. VIA CARDUCCI), MILANO

**Japan**

Yoshigai Corporation  
Phone: 81 6 4309 2530  
FAX: 81 6 4309 2532  
74-3 Nagata-Higashi,  
Higashi-Osaka, Japan

## Korea

OD Bike Inc.  
Phone: 82 2 474 0818  
Fax: 82 2 474 0656  
3F 379-20 SUNGNAE-DONG, KANGDONG-KU,  
SEOUL, 134-030

## Latvia

Veloserviss  
Phone: 371 750 1292  
Fax: 371 750 1298  
1/1 HAPSALAS ST., RIGA, LV-1005

## Luxembourg

Vertex Cycle Systems BV  
Phone: 31 23 57 18184  
FAX: 31 23 57 18606  
FLEMINGSTRAAT 100A, 2041 VL ZANDVOORT  
HOLLAND

## Malaysia

Gin Huat Cycle Trading  
Phone: 603 6189 1663  
FAX: 603 6189 1662  
NO. 8, JALAN INDUSTRI BATU CAVES ½  
TAMAN PERINDUSTRIAN BATU CAVES  
68100 BATU CAVES  
SELANGOR DARUL EHSAN

## Mexico

Tekno Bike & Outdoor Prod.  
Phone: 52 8 343 1550  
FAX: 52 8 343 1275  
Porfirio Diaz #469  
Col Centro CP 6400  
Monterey, NL Mexico

## New Zealand

W.H. Whorrall & Co. Ltd.  
Phone: 64 9 63 6 06 41  
FAX: 64 9 63 6 06 31  
43 FELIX ST  
PENROSE, AUCKLAND  
NEW ZEALAND

## Norway

Hallman Sports  
Phone: 46 18 56 16 00  
FAX: 46 18 50 03 22  
HALLNASGATAN 8, S-75228 UPPSALA, SWEDEN

## Panama

Distribuidora Rali S.A.  
Phone: 507 220-3844  
FAX: 507 220-5303  
VIA ESPANS EDIFICA CARCEP, P.O. BOX 87-0852,  
PANAMA 7

## Peru

Rojo Sports  
Phone: 511 447 0838  
FAX: 511 447 0838  
AV. REPUBLICA DE, PANAMA 6513, LIMA 33

## Poland

Giant Polska S.P. ZOO  
Phone: 48 22 645 14 34  
FAX: 48 22 645 14 36  
AL NIEPODLEGLOSCI 221-4, 02-087 WARSZAWA

## Portugal

Bicimax  
Phone: 351 244 553276  
FAX: 351 244 553187  
APARTADO 34, 2431 MARINHA GRANDE

## Russia

Sportex  
Phone: 7095 288 4524  
FAX: 7095 288 6888  
KUDRINSKAYA PL., 1., P.O.BOX 33, MOSCOW,  
123242

## St. Maarten

Tri-Sport International  
Phone: 5995 43462  
FAX: 5995 43928  
8 AIRPORT BOULEVARD, SIMPSON BAY,  
NAMIBIA

## Singapore

Trekology Bikes 3  
Phone: 65 466 2673  
FAX: 65 466 7610  
24 HOLLAND GROVE ROAD, SINGAPORE, 1545

## Slovak Republic

Paul Lange Oslany  
Phone: 42 1 862 5492 344  
FAX: 42 1 862 5492 350  
MIEROVA 854/37 OSLANY, 97247 SLOVAKIA

## Slovenia

Proloco Trade  
Phone: 386 64 380 200  
FAX: 386 64 380 2022  
ENOTA KRANJ, BRITOF 96A, 4000 KRANJ

## South Africa

Coolheat (SA) (PTY) Ltd.  
Phone: 27 11 807 5282  
FAX: 27 11 807 2998  
3 RUARGH STREET, PARK CENTRAL, P O BOX  
740, JOHANNESBURG 2001

## Spain

K. Motor Dealer S.L.  
Phone: 34 9 1 637 70 97  
FAX: 34 9 1 637 72 64  
PARQUE INDUSTRIAL, EUROPOLIS EDIFICO  
BRUSELA, BLOQUE 4, NAVE 1, LAS ROZAS  
(MADRID), N/A, 28230

## Sweden

Hallman Sports  
Phone: 46 18 56 16 00  
FAX: 46 18 50 03 22  
HALLNASGATAN 8, S-75228 UPPSALA

## Switzerland

Cilo Bike Service SA  
Phone: 41 21 641 63 30  
FAX: 41 21 641 63 82  
CH. DE L'ORIO 30 A, CASE POSTALE 64, CH-  
1032 ROMANEL S. LAUSANNE

## Taiwan

Biketech Co. Ltd.  
Phone: 886 22 694 5806  
FAX: 886 22 694 6133  
NO. 12 FU TEH ROAD, 266 LANE, 37 ALLEY  
HSICHIH, TAIPEI HSIEN, TAIWAN, R.O.C.

## Thailand

Probike Co. Ltd.  
Phone: 662 254 1077  
FAX: 662 254 1078  
237/2 SARASIN ROAD, LUMPINNE, PATUMWAN,  
BANGKOK, 10330

## Turkey

EBSAT  
Phone: 90 212 514 0525  
FAX: 90 212 519 4846  
EBSAT EMEK BISKILET, EBUSSUUD CAD NO.67,  
34410 SIRKECI, ISTANBUL, 34410

## United Kingdom

Madison  
Phone: 44 20 8385 3385  
Fax: 44 20 8385 3443  
BUCKINGHAME HOUSE EAST, THE BROADWAY  
STANMORE, MIDDLESEX HA7 4EA  
UNITED KINGDOM

## Venezuela

Bike Sports  
Phone 582 751 9709  
FAX: 582 753 5071  
CENTRO COMERCIAL IBARRA, PLANTA BAJA,  
LOCAL 3-A CALLE GARCILAZO, COLINAS DE  
BELLO, 0, CARACAS